



# P11 Plus

Portable  
Colour Doppler  
Ultrasound  
System



*Premium solution  
in Shared-Services  
Ultrasound*

**Premium High-end Compact ultrasound** with the highest level of performance in all the applications offering both the flexibility of a portable system and ergonomics and capabilities of a cart-based unit.

**Advanced clinical solutions** for multi-purpose use. High level of performance and maximum compatibility for faster and safer integrated diagnosis.

**The Imaging performance and features**, combined with the modularity and versatility, make P11Plus the perfect choice for private practices and hospital departments requiring Cardiovascular, Abdominal, Vascular, Small Parts, Musculoskeletal, Obstetrics and Gynaecology applications.

**The innovative ergonomic trolley** with fully adjustable console, multi extension probe connectors, large tilting LCD screen ensure maximum user and patient comfort whilst maintaining a truly mobile unit.

**Advanced technologies** such as large angle scanning and temperature control for Transvaginal probes , new Trans rectal mono and biplane transducers as well specialty probes such as TEE and Intraoperative probes make the P11Plus a new standard in Shared-Service ultrasound applications.

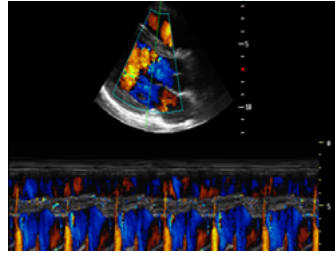
## *Advanced Technologies*

- Digital front-end technology
- Multi-beam technology
- Spatial compound imaging
- SRT- Speckle Reduction Technology
- Tissue Harmonic Imaging
- Invert harmonic imaging
- High Pulse Repetition Frequency
- Panoramic imaging
- 4D imaging
- Graphic diagnosis icon
- Elastography imaging

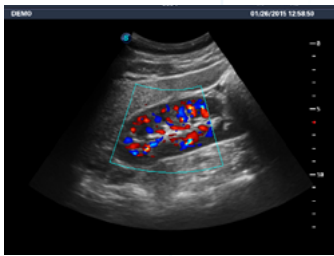
# Imaging solutions for all your needs



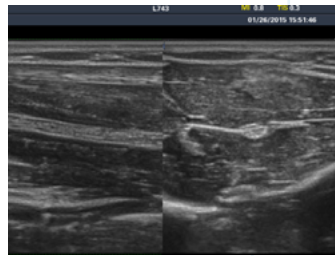
**OB/Gyn/**  
Baby Face



**Cardiac /**  
TDI Valve



**Abdominal /**  
Kidney CFM



**MSK /**  
Medium Nerve

The wide range of Linear, Convex and Phased Array multifrequency probes allow each user to define the best solution for Cardiovascular, Abdominal, OB/GYN and POC applications



Outstanding Image quality in a new powerful lightweight architecture designed to meet all your high-performance application requirements, as volumetric 4D with superior rendering capabilities, Elastography imaging and Stress Echo function for cardiovascular exams.

High speed PC and Linux operating system, ensuring both flexibility and stability.

Functional updates and system maintenance via Software keep your P11Plus up to date and ensure the highest return on your investment.



 **MediSono**

*a Strena Medical Company*

3016 NW 82nd Avenue Doral,  
Florida 33122 USA  
+1 302 451.92.34  
info@medisono.com



www.medisono.com

Is an American company delivering High Quality, Reliable imaging solutions with the highest industry standards in service and post-sales assistance. Our expertise in healthcare comes from over 35 years of healthcare experience ensuring we understand and anticipate your needs.

**High Quality Imaging Solutions - American Service and Reliability**

Specifications subject to change without notice. For further details, please contact your Medisono sales representative.

Code: BRO-P11 PLUS-Rev D-March 2020